

Transaction Information

Tool ID	LSA100
Tool Status	Disconnected
Location	Dresden, Germany
Wafer Size	300 mm
Fab Section	Diffusion
Tool Available Date	2021-03-30

General Product Information

Vendor Supplier	Veeco
Model	LSA100A
Vintage	2005
Serial No	6110
Asset Description	LSA100A
Software Version	LSA0508 Build 11
CIM	SECS GEM
Process	Laser Spike Anneal

Hardware Configuration (Fab)

System Type	Description	Quantity	Status
Main System			
Main System	EFEM (2x Loadport + PreHeat/ PostCool + Robot)	1	
Main System	Chamber	1	
Main System			
Handler System	Genmark GB8SM robot	1	
Factory Interface	FOUP	2	
Options System			
Others			

Hardware Configuration (Subfab / Auxilliary Units)

Description	Quantity	Status
Heatexchanger	2	
Rofin Slab2 Laser	1	
Remote Rack	1	

Missing/Faulty Parts / Accesories List

Description	Quantity
PreAligner	1
SPX Controller	1
Camera Switch	1
Topplate	1
3-Color Detector Box	1
Puffer Assy	1
Moxa NPort Server	1
Network Switch	1
Loadport Motor	1
Hot Chuck Controller	1
Genmark Robot	1

Description	Quantity
GB8SM	

Tool Pictures

General

undefined



General

undefined



Hardware Sub-fab

Heat Exchanger / Laser + Remote
Rack



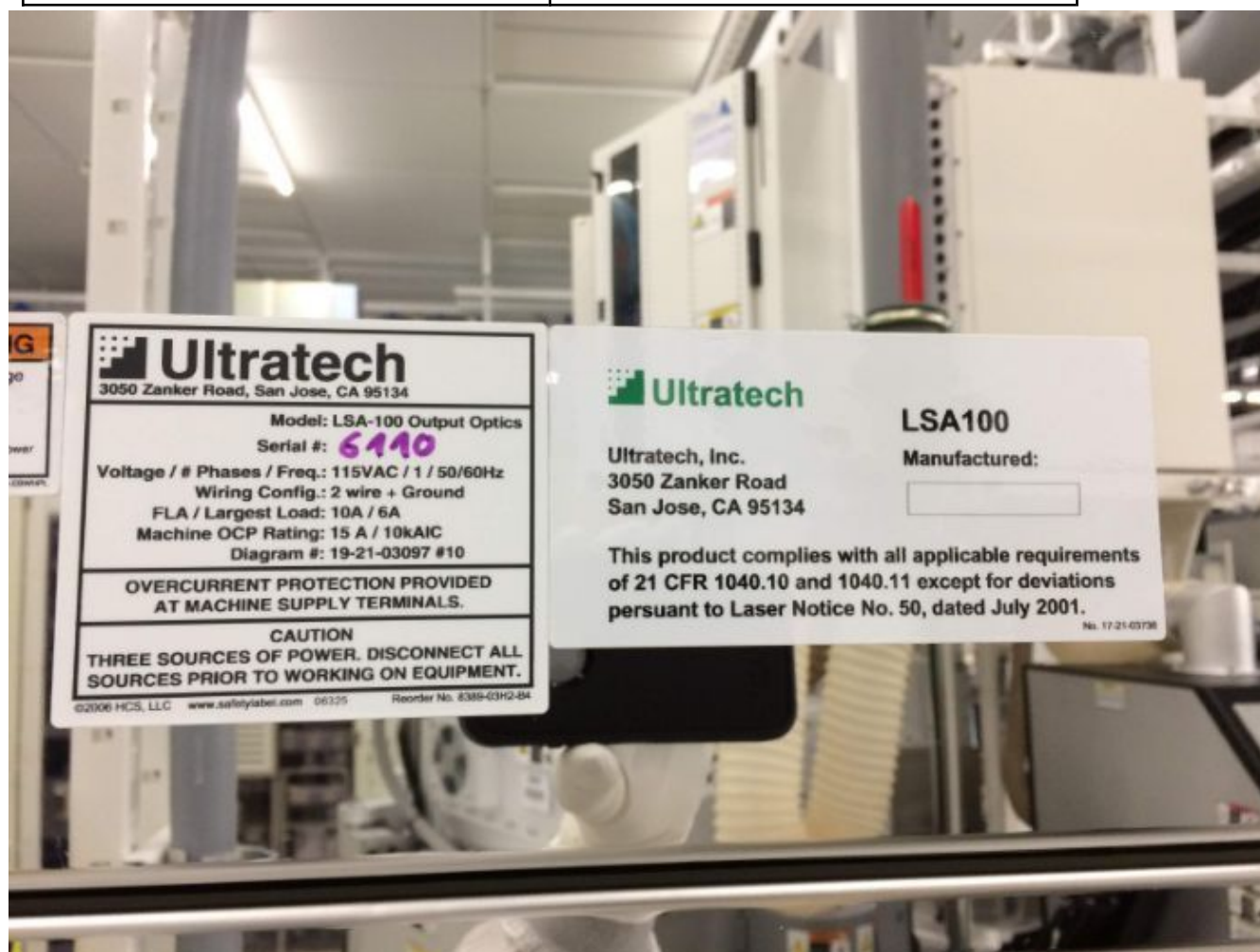
Hardware Sub-fab

Heat Exchanger / Laser + Remote
Rack



Manufacture Serial

6110



Ultratech
3050 Zanker Road, San Jose, CA 95134

Model: LSA-100 Output Optics
Serial #: **6110**

Voltage / # Phases / Freq.: 115VAC / 1 / 50/60Hz
Wiring Config.: 2 wire + Ground
FLA / Largest Load: 10A / 6A
Machine OCP Rating: 15 A / 10kAIC
Diagram #: 19-21-03097 #10

**OVERCURRENT PROTECTION PROVIDED
AT MACHINE SUPPLY TERMINALS.**

**CAUTION
THREE SOURCES OF POWER. DISCONNECT ALL
SOURCES PRIOR TO WORKING ON EQUIPMENT.**

©2006 HCS, LLC www.safetylabel.com 06125 Reorder No. 8389-G3H2-04

Ultratech

LSA100

Ultratech, Inc.
3050 Zanker Road
San Jose, CA 95134

Manufactured:

This product complies with all applicable requirements of 21 CFR 1040.10 and 1040.11 except for deviations pursuant to Laser Notice No. 50, dated July 2001.

No. 17-21-03738

Missing Parts

Robot / 3-Color Detector Box / SPX
Controller



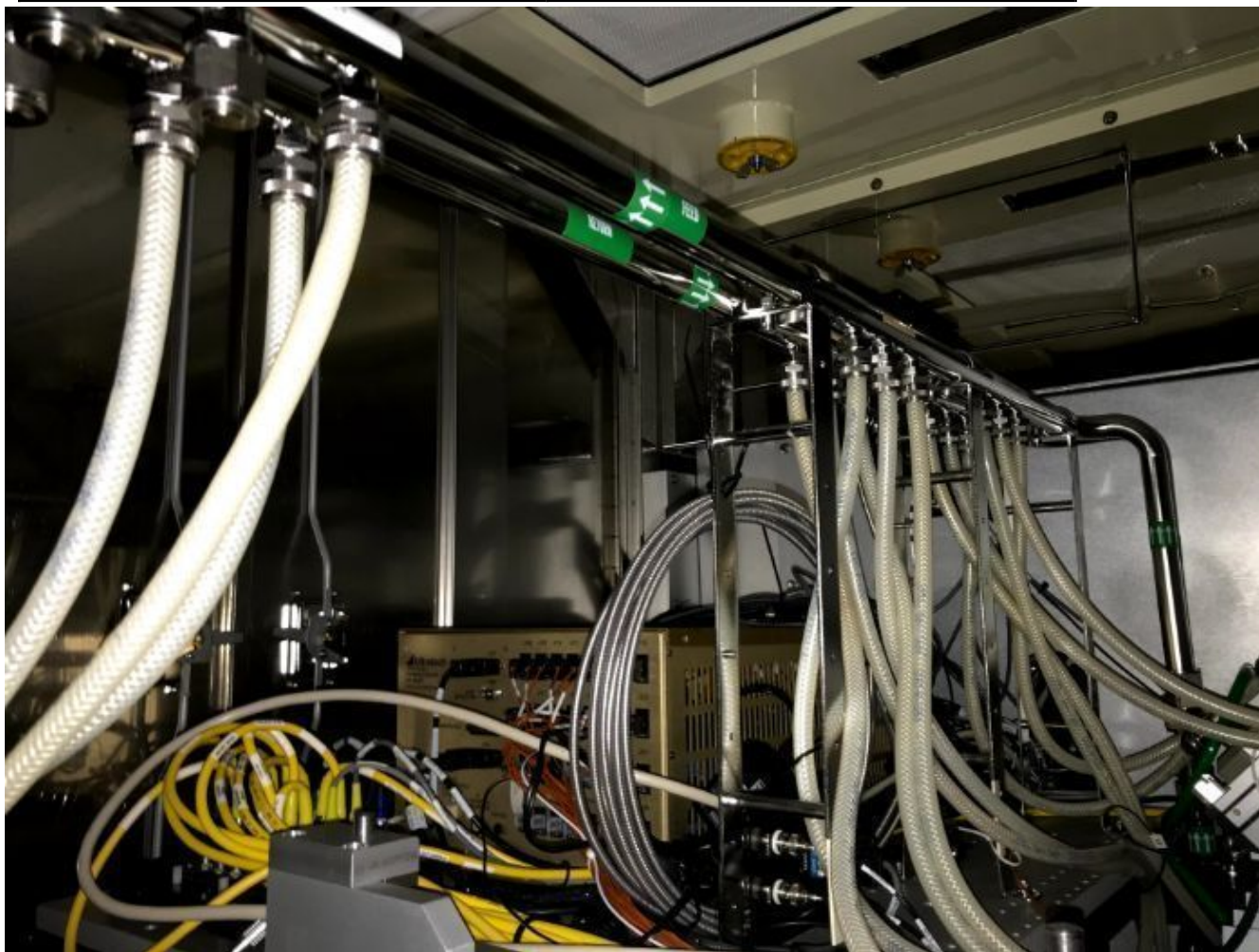
Missing Parts

Robot / 3-Color Detector Box / SPX
Controller



Missing Parts

Robot / 3-Color Detector Box / SPX
Controller



Additional Configuration Files