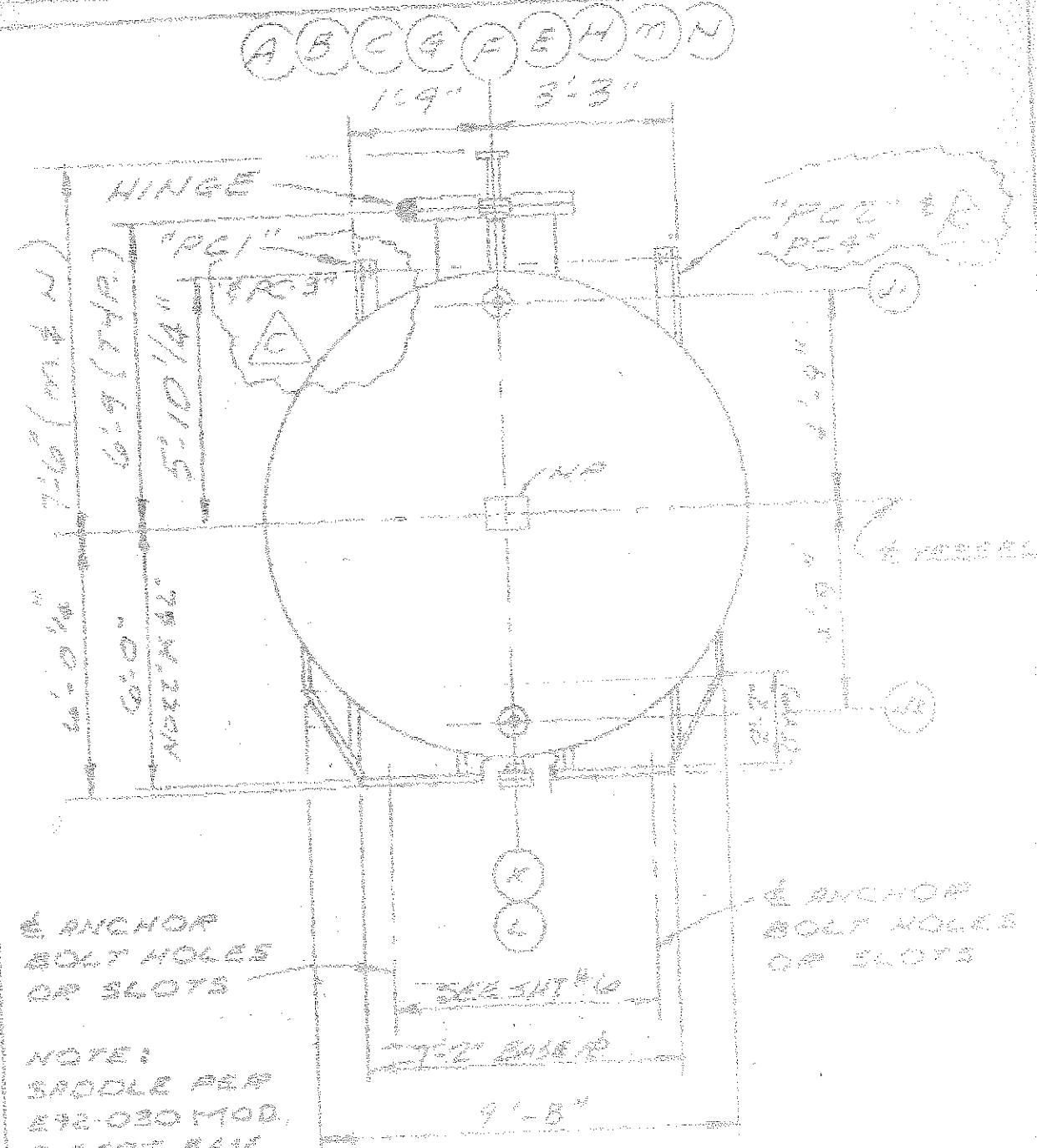


SITE: STYROFOAM  
 LOCATION: ONE  
 FILE/JOB NO. 5373  
 CHARGE NO.  
 B/M NO. 5279A-50033  
 P.O. NO.



ANCHOR BOLT HOLES OR SLOTS

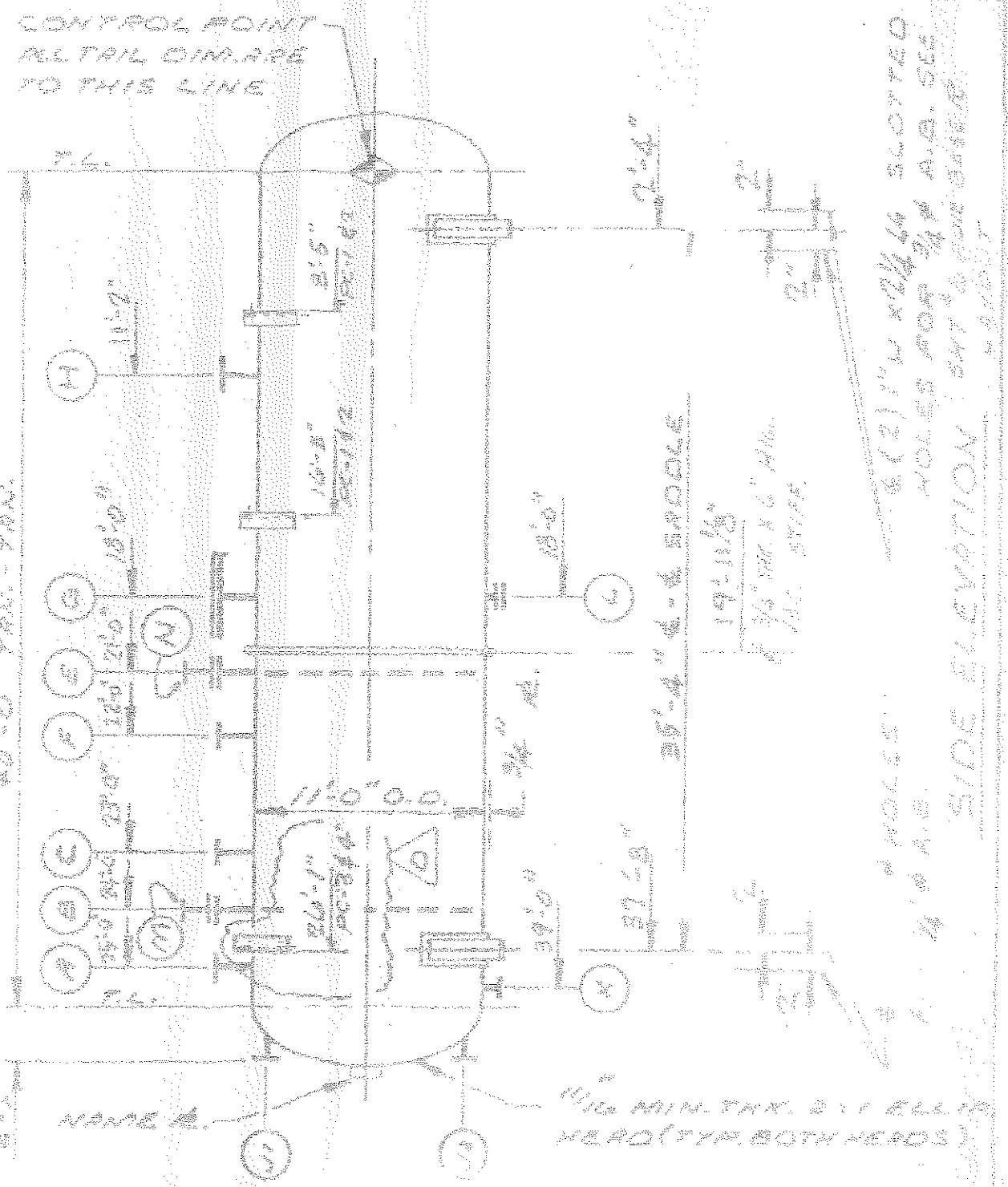
NOTE:  
 SADDLE PER 842-030 MOD. EXCEPT BASE # 10861 TAN

END ELEVATION

SPEC. NO. 15-103-50033		THE DOW CHEMICAL COMPANY		EQIP. NO. 100
CHECKED	DATE 11-81	HCFC STORAGE TANK		SPEC. NO. 15-103-50033
APPROVED	DATE	REVISIONS		SHEET 3

REVISED 7/88

SITE: STYROFOAM  
 LOCATION: DALTON, GA.  
 FILE/JOB NO. 5373  
 CHARGE NO.  
 B/M NO. 5279A-50033  
 P.O. NO.



CONTROL POINT  
 ALL TAIL DIM. ARE  
 TO THIS LINE

80'-0" TAN. - TAN.

19'-11 1/8"  
 1/2" MIN. THK. X 6' ALUM.  
 1/2" STIFF

6 (2) 1" W X 2 1/4" L6 SLOTTED HOLES FOR 3/4" A.B. SEE SIDE ELEVATION. 541 1/2" DIA. 1/2" STIFF

SPEC. NO. 15-103-50033		THE DOW CHEMICAL COMPANY		EQIP. NO. TK-100
CHECKED	DATE 11-81	HCFC STORAGE TANK		SPEC. NO. 15-103-50033
APPROVED	DATE	REVISIONS		SHEET 3

REVISED 7/88